



Worldwide Hardware Solutions

Becker Hardware Solutions

HEAD OFFICE : 2079-2090, Green Southern Avenue,
New South wales - 2322, Australia.

Info@becker-firesolutions.com | www.becker-firesolutions.com

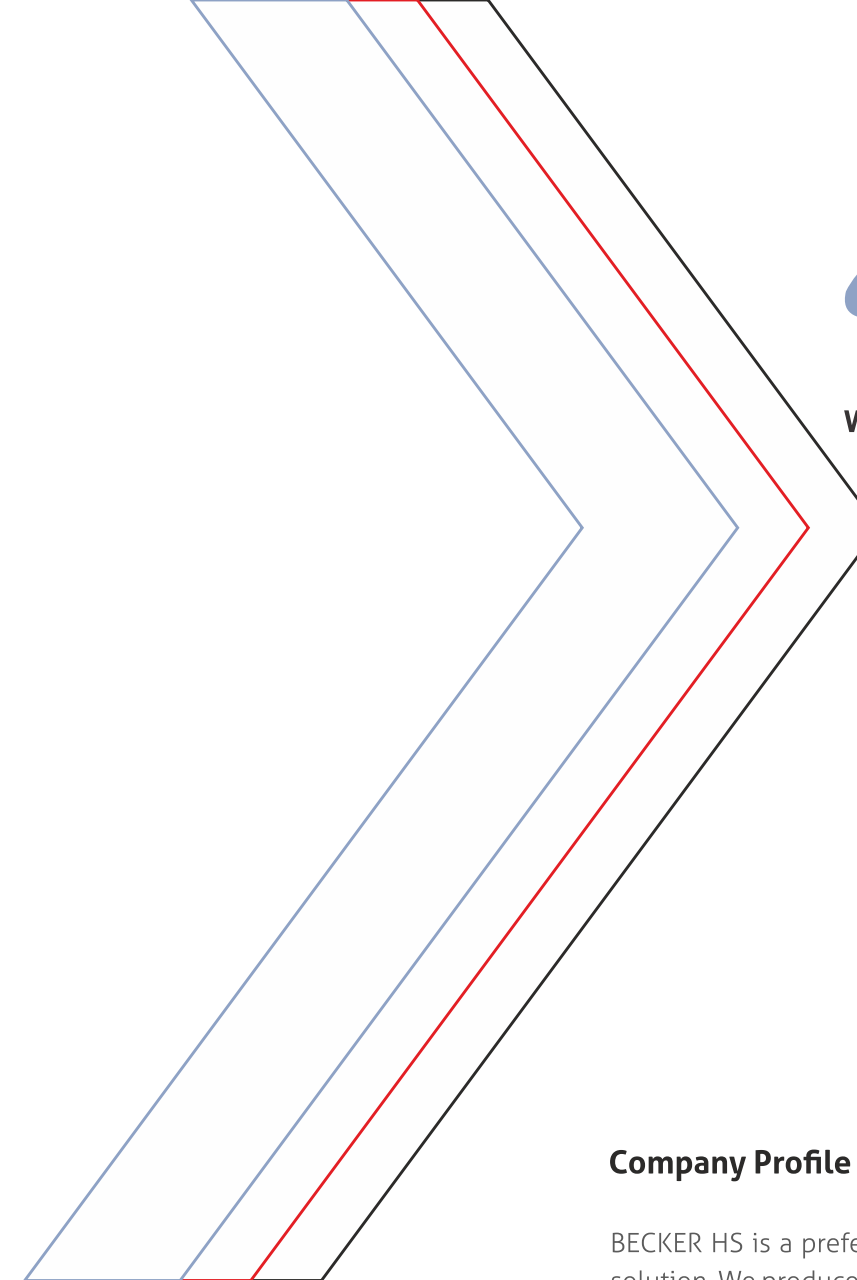
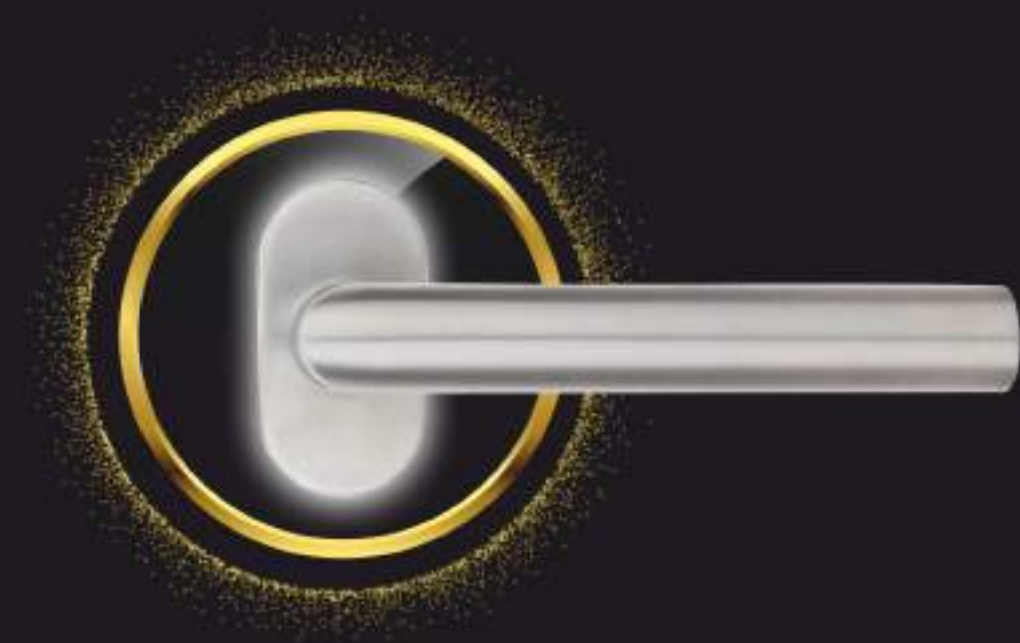
In India Marketed By :



Worldwide Hardware Solutions



World wide
Hardware Solutions



Worldwide Hardware Solutions

Company Profile :

BECKER HS is a preferred global brand for reliable Architectural hardware solution. We produces precision architectural hardware used in some of the most prestigious architectural projects across the world. With a well-established reputation for high quality products, this iconic brand provides a wide range of locking solutions supported by after-sales support network.

We at BECKER HS, are quality conscious of our products and are always on the path of evolving new products as per the ever changing taste of the customer. The new product are designed taking into account the customer's requirement in terms of its functionality and durability.

It has gained respect amongst the most quality conscious buyers across world. In India, we have an experienced team that can help you find the best available aesthetic solution for your requirements in the Guest Room, the optimum solution in the Public Areas, draw a fire door and flush door hardware schedule for the Back-of-House areas and a master keying schedule for the entire property.

We aspire to be the most popular choice of brand across the globe for our Architectural Hardware portfolio, which we constantly keep expanding year on year.



Becker HS represents Non-Fire rated series.

Becker FS represents Fire rated series



INDEX

MORTISE LOCKS	01
---------------	----

EURO PROFILE CYLINDERS	03
------------------------	----

SS LEVER HANDLES	05
------------------	----

CYLINDRICAL LOCKS	08
-------------------	----

ECONOMIC CY HANDLES	09
---------------------	----

ECONOMIC KY HANDLES	10
---------------------	----

PULL HANDLES	11
--------------	----

DOOR CLOSERS	13
--------------	----

PANIC EXIT DEVICE	15
-------------------	----

FIRE SEALS	17
------------	----

HINGES	18
--------	----

FLOOR SPRINGS	19
---------------	----

PATCH FITTINGS	21
----------------	----

SHOWER HINGES	23
---------------	----

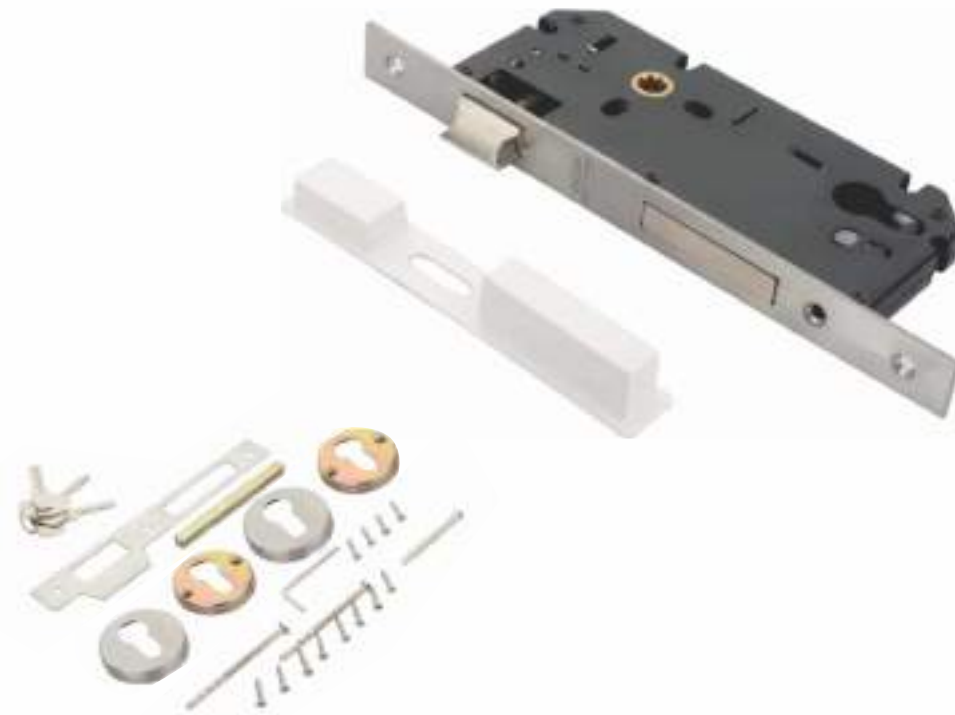
SHOWER ACCESSORIES	26
--------------------	----

PYROBECK – Fire Resistant Glass	27
---------------------------------	----

PVC SEALS	29
-----------	----

DOOR ACCESSORIES	30
------------------	----

MORTISE LOCKS



Strength & Durability

The Becker HS Mortise lock range has been tested to 100,000 operation cycles

Materials

Latch is made of brass.

Application

The Becker HS Mortise lock series is suitable for Hinged Timber, Metal door and Fire door where applicable.

Cylinder

Standard fixed cam Euro profile cylinder.

Locking Function

Passage Latch
Privacy Lock Case
Entrance Lock Case
Deadbolt Lock Case
Nightlatch lock case



MORTISE LOCKS

MORTISE SASH LOCK



Becker FS
MODEL NO. : SL 7260 K
Backset 50 mm



MORTISE LOCK FOR DOUBLE REBATED DOOR



Becker HS
MODEL NO. : SL DR RH 7260 K & SL DR LH 7260 K
Backset 50 mm

MORTISE DEAD LOCK



Becker FS
MODEL NO. : DL 7260 K
Backset 50 mm



MORTISE LATCH



Becker HS
MODEL NO. : ML 7260 K
Backset 50 mm

NARROW STILE MORTISE SASH LOCK



Becker HS
MODEL NO. : NSSL 7260 K
Backset 30 mm

NARROW STILE DEAD LOCK



Becker HS
MODEL NO. : NSDL 7260 K
Backset 30 mm

SHAFT LOCK



Becker HS
MODEL NO. : ASDB 7260
Backset 60 mm



ONE SIDE KEY & OTHER SIDE THUMB TURN WITH REGULAR KEY



BOTH SIDE KEY WITH REGULAR KEY



ONE SIDE KEY & OTHER SIDE THUMB TURN WITH DIMPLE KEY



BOTH SIDE KEY WITH DIMPLE KEY



PRIVACY CYLINDER



HALF CYLINDER WITH KEY



HALF CYLINDER WITH KNOB



Cylinders

Becker HS cylinders are available within a choice of keying system to the degree of security desired for the facility requirements. Cylinders are normally supplied with three keys. All other keys, such as master keys, control keys and construction keys must be specified as separate items.

Keyway

Unique key way design to meet most sophisticate situations and applications. The dimple cylinder is highly recommended and perfect solution for commercial and high end residential applications.

Master Keying

Master key system can be very useful for operating convenience to control a building, group of buildings, floors of a building, or even sections of a floor. When particularly large groups of doors are involved a master key system is almost a necessity for safety and security control.

Material : Brass



SS LEVER HANDLES



Becker HS

MODEL NO. : **BSL 101**

FINISH: SS / MATT

GRADE: SS 304



Becker HS

MODEL NO. : **BSL 102**

FINISH: SS / MATT

GRADE: SS 304



Becker HS

MODEL NO. : **BSL 103**

FINISH: SS / MATT

GRADE: SS 304



Becker HS

MODEL NO. : **BSL 104**

FINISH: SS / MATT

GRADE: SS 304



Becker HS

MODEL NO. : **BSL 105**

FINISH: SS / MATT

GRADE: SS 304



Becker HS

MODEL NO. : **BSL 106**

FINISH: SS / MATT

GRADE: SS 304

Specification Service

For all Architectural hardware specification assistance refer to your local BECKER HS Sales Office.

A fully comprehensive, obligation free, Architectural Door Hardware specification can be prepared by Architectural Hardware Consultants.

Cleaning

Care should be taken during construction/refurbishment to ensure that paint & thinners splashes are carefully removed from locks, furniture and hardware. Removal of these splashes with strong cleaning agents or scourers should be avoided.

Dirt and grime should be regularly removed with a soft and clean cloth. Do not use solvent based or abrasive cleaning agents. During cleaning, care should be taken to prevent cleaning solution from entering the cylinder keyway. Surfaces should be dried and possibly lubricated.



SS LEVER HANDLES



Becker HS

MODEL NO. : **BSL 107**

FINISH: SS / MATT

GRADE: SS 304



Becker HS

MODEL NO. : **BSL 108**

FINISH: SS / MATT

GRADE: SS 304



Becker HS

MODEL NO. : **BSL 109**

FINISH: SS / MATT

GRADE: SS 304



Becker HS

MODEL NO. : **BSL 110**

FINISH: SS / MATT

GRADE: SS 304



Becker HS

MODEL NO. : **BSL 111**

FINISH: SS / MATT

GRADE: SS 304



Becker HS

MODEL NO. : **BSL 112**

FINISH: SS / MATT

GRADE: SS 304

CYLINDRICAL LOCKS



Becker HS

MODEL NO. : **B CYS 02 E**

GRADE: SS 202

With Regular Key



Becker HS

MODEL NO. : **B CYS 01 E**

GRADE: SS 202

Privacy Function



Becker HS

MODEL NO. : **B CYS 02**

GRADE: SS 304

With Dimple Key



Becker HS

MODEL NO. : **B CYS 01**

GRADE: SS 304

Privacy Function

ECONOMIC CY HANDLES



Becker HS
MODEL NO. : B ZCY 201
SIZE : 8" & 10"
MATERIAL : Zinc Alloy
FINISH : SS



Becker HS
MODEL NO. : B ZCY 202
SIZE : 8"
MATERIAL : Zinc Alloy
FINISH : SS



Becker HS
MODEL NO. : B ZCY 203
SIZE : 8"
MATERIAL : Zinc Alloy
FINISH : SS



Becker HS
MODEL NO. : B ZCY 204
SIZE : 8" & 10"
MATERIAL : Zinc Alloy
FINISH : SS



Becker HS
MODEL NO. : B ZCY 205
SIZE : 8" & 10"
MATERIAL : Zinc Alloy
FINISH : SS



Becker HS
MODEL NO. : B ZCY 206
SIZE : 8" & 10"
MATERIAL : Zinc Alloy
FINISH : SS



Becker HS
MODEL NO. : B ZCY 207
SIZE : 8" & 10"
MATERIAL : Zinc Alloy
FINISH : SS

ECONOMIC KY HANDLES



Becker HS
MODEL NO. : B ZKY 201
MATERIAL : Zinc Alloy
FINISH : SS



Becker HS
MODEL NO. : B ZKY 202
MATERIAL : Zinc Alloy
FINISH : SS



Becker HS
MODEL NO. : B ZKY 203
MATERIAL : Zinc Alloy
FINISH : SS



Becker HS
MODEL NO. : B ZKY 204
MATERIAL : Zinc Alloy
FINISH : SS



Becker HS
MODEL NO. : B ZKY 205
MATERIAL : Zinc Alloy
FINISH : SS



Becker HS
MODEL NO. : B CKY 206
MATERIAL : Zinc Alloy
FINISH : SS/AB

PULL HANDLES



BECKER HS Handles are constructed using the finest materials to incorporate the maximum standards in style, durability, finish and design.

Style & Variety

- Combining fit for purpose with the epitome of style, the BECKER HS Handles range represents a comprehensive collection of high quality back to back handles.
- Six designs, ranging from the classic to the contemporary, have been selected to compliment the evolving style requirements of both residential and commercial markets.

Application

BECKER HS Entrance Handles are suitable for use on timber or aluminium door as well as glass doors; making them the ideal choice for commercial, industrial and residential applications.

Material : SS 304
Finish : SS/MATT



PULL HANDLES



Becker HS
MODEL NO. : **BPH 1001**
Ø 19 & 22 MM
SIZE : 150 . 200 . 250 . 300



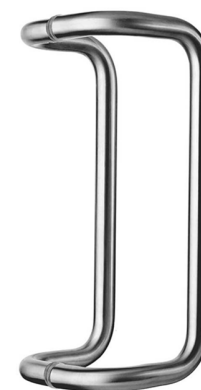
Becker HS
MODEL NO. : **BPH 1002**
Ø 32 MM
SIZE : 300 . 600 . 1200



Becker HS
MODEL NO. : **BPH 1003**
SIZE : 300 . 600 . 1200



Becker HS
MODEL NO. : **BPH 1004**
SIZE : 300 . 600 . 1200



Becker HS
MODEL NO. : **BPH 1005**
SIZE : 300 . 600 . 1200



Becker HS
MODEL NO. : **BPH 1006**
SIZE : 300 . 600 . 1000

DOOR CLOSERS



Test

UL with 2 hr fire rated

Materials

Extruded aluminium body with hard anodised coating.
Alloy steel rack and pinion mechanism operated by silicon chrome alloy steel springs and forged steel arms.

Handing

BECKER HS closers are non-handed.
Suitable for clockwise or anticlockwise opening door.

Backcheck

Backcheck cushions or slows the opening movement of the door prior to reaching final open position.
Backcheck intensity is adjustable to allow for door size, door weight and closing power.



DOOR CLOSERS

CE



Becker FS

MODEL NO. : **BLC 604** 🔥 UL

Suitable for use on doors up to 60-85 Kgs or 1100 mm

CE



Becker HS

MODEL NO. : **BLC 510**

Suitable for use on doors up to 45-65 Kgs or 950 mm

CE



Becker FS

MODEL NO. : **505 BC** 🔥 UL

500,000 Cycle test,
Suitable for use on doors up to 80-120 Kgs or 1250 mm

CE



Becker FS

MODEL NO. : **BLC 605** 🔥 UL

Suitable for use on doors up to 80-120 Kgs or 1250 mm



Becker HS

MODEL NO. : **BLC 204SL**

Suitable for use on doors up to 25-65 Kgs or 950 mm



Becker HS

MODEL NO. : **BLC 104A**

Suitable for use on doors up to 60-80 Kgs or 1050 mm



Becker FS
MODEL NO. : 500S 🔥



Becker FS
MODEL NO. : 560S 🔥



Becker HS
MODEL NO. : 0065

Panic Exit Device 500S & 900 Series

500S Panic Exit Device, Touch type Single and double leaf door (Stainless Steel) and 900 Series for Cross bar (Alloy Anodised)

- Type: Rim Type & Cross Bar
- Material Heavy Gauge Steel or Stainless Steel 304 Grade for 500S Series & Alloy anodised for 900 series.
- Accommodates wood and metal doors
- Apply to door for fire protection, smoke ventilation
- Apply to single & double leaf door
- Could be match with outside access device like cylinder, trim and lever
- Open by handspike inside and by key outside
- Surface Mounted for ease of installation



Becker FS
MODEL NO. : SBL990 🔥



Becker FS
MODEL NO. : SBL 995 🔥

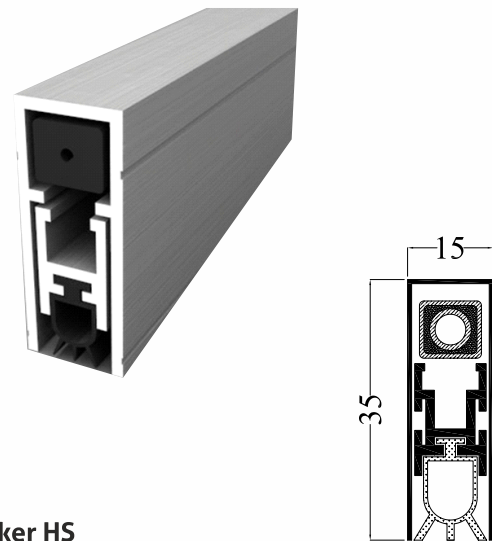


Becker HS
MODEL NO. : 011LE



Becker HS
MODEL NO. : 011KE

AUTOMATIC DOOR BOOTOM SEAL



Becker HS

MODEL NO. : B FR 01

SIZE : 820mm/920mm /1070mm
Spring loaded Automatic door bottom

ASTRAGAL SEAL

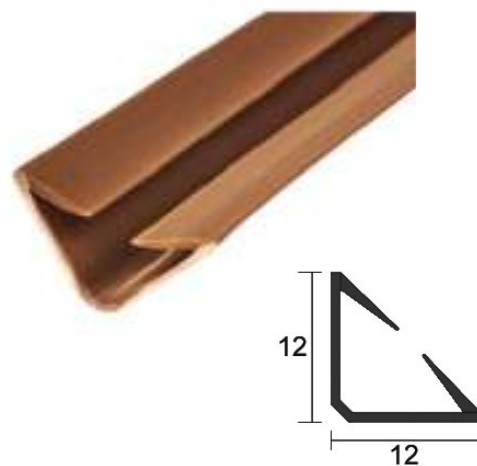


Becker HS

MODEL NO. : B FR 02

SIZE : 2050 mm / 2350 mm

SMOKE SEAL

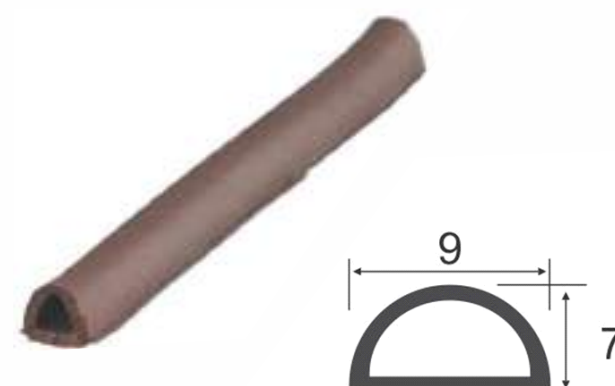


Becker HS

MODEL NO. : B FR 03

SIZE :12 x 12 & 15 x 15
Colour : Black / Brown / Grey
Self Adhesive EPDM type

DOOR SEAL



Becker HS

MODEL NO. : B FR 04

Colour : Black / Brown

BALL BEARING HINGES



Becker FS

MODEL NO. : BB 1953

SIZE : 100 x 75 x 3 mm
GRADE : SS 304



BALL BEARING HINGES



Becker FS

MODEL NO. : BB 1753

SIZE : 100 x 89 x 3 mm
GRADE : SS 304



BALL BEARING HINGES



Becker FS

MODEL NO. : BB 1853

SIZE : 125 x 89 x 3 mm
GRADE : SS 304



SOSS HINGE



Becker HS

MODEL NO. : B CH

SIZE : 118mm x 25mm x 36.50mm
GRADE : SS 304

BUTT HINGES



Becker HS

MODEL NO. : BH 104

SIZE : 4mm - 1mm x 2.5mm / 4mm - 1.25mm x 3mm
GRADE : SS 202

BUTT HINGES



Becker HS

MODEL NO. : BH 105

SIZE : 5mm - 1mm x 2.5mm / 5mm - 1.25mm x 3mm
GRADE : SS 202

FLOOR SPRINGS



Standard floor closer packed with AB accessories (iron) with non-hold-open function Please specify different accessories type and/or hold-open degree when required.

Features

- Tested to EN1154: Product performance standard
- Double Action Floor Spring
- Cast Iron Body
- Dual Valve Adjusting, closing and latching speed
- Maximum opening angle in each direction of 130°
- Applicable for timber, glass and aluminium Door
- Power Fixed Sizes 2, 3 and 4



Maximum Width of Door	850 mm	950 mm	1100 mm
Maximum Weight of Door	80 kg	100 kg	150 kg
Maximum Open Angle	130°	130°	130°
Hold Open	105°, 90°	105°, 90°	105°, 90°
Closing Speed	130°	130°	130°
Final Closing Speed	15° - 0°	15° - 0°	15° - 0°
Applicability	Wooden, Glass & Aluminium Door etc. Left-Open, Right-Open, Single-Side Open or both Side-Open.	Wooden, Glass & Aluminium Door etc. Left-Open, Right-Open, Single-Side Open or both Side-Open.	Wooden, Glass & Aluminium Door etc. Left-Open, Right-Open, Single-Side Open or both Side-Open.
Weight of Floor Spring	5.1 kg	5.2 kg	5.3 kg
Dimension of Cement Box Length Width Height	305mm 108mm 40.5mm	305mm 108mm 40.5mm	305mm 108mm 40.5mm
Tested to	5,00,000 cycles	5,00,000 cycles	5,00,000 cycles
<ul style="list-style-type: none">• Inside the Frame: Height can be adjusted within 4mm, width can be adjusted within 5 mm between left and right length can be adjusted within 7 mm• Fix Power EN - 2 to EN - 4			

FLOOR SPRINGS



Becker HS
MODEL NO. : **B FS 76**
DOUBLE CYLINDER FLOOR SPRINGS



Becker HS
MODEL NO. : **B FS 86**
DOUBLE CYLINDER FLOOR SPRINGS



Becker HS
MODEL NO. : **B FS 96**
DOUBLE CYLINDER HEAVY DUTY FLOOR SPRINGS

PATCH FITTINGS



Specification Service

A fully comprehensive, obligation free, Architectural Door Hardware specification can be prepared by Architectural Hardware Consultants.

Cleaning

Care should be taken during construction/refurbishment to ensure that paint & thinners splashes are carefully removed from locks, furniture and hardware. Removal of these splashes with strong cleaning agents or scourers should be avoided.

Dirt and grime should be regularly removed with a soft and clean cloth. Do not use solvent based or abrasive cleaning agents. During cleaning, care should be taken to prevent cleaning solution from entering the cylinder keyway. Surfaces should be dried and possibly lubricated.

Finish : SSS



PATCH FITTINGS

TOP PATCH



Becker HS
MODEL NO. : B PF 01

BOTTOM PATCH



Becker HS
MODEL NO. : B PF 02

CONNECTING PATCH WITH PIVOT



Becker HS
MODEL NO. : B PF 03

WALL TO GLASS CONNECTION PATCH



Becker HS
MODEL NO. : B PF 04

WALL TO GLASS CONNECTING PATCH



Becker HS
MODEL NO. : B PF 05

TOP FIX CORNER



Becker HS
MODEL NO. : B PF 06

OVER PANEL PIVOT PATCH WITH PLATE



Becker HS
MODEL NO. : B PF 07

CENTRE PATCH LOCK



Becker HS
MODEL NO. : B PF 08

GLASS PIVOT



Becker HS
MODEL NO. : B PF 09

SHOWER HINGES



BECKER HS Shower Hardware offer comprehensive ranges of glass hardware and accessories of high quality and novel designs for semi commercial applications

Style & Variety

- Combining fit for purpose with the epitome of style, the BECKER HS Shower Hardware range represents a comprehensive collection of high quality glass shower door accessories.
- Novel and elegant designs, ranging from the classic to the contemporary, have been selected to compliment the evolving style requirements of both residential and commercial markets.

Application

BECKER HS Shower Hardware are suitable for use on 8mm to 12mm thick floated and tempered glass door, making them the ideal for hotel and residential application.

Standard

- Neutral Salt Spray Tested
- Over 240hr for shower hinges
- Over 300hr for stainless steel product



SHOWER HINGES



Becker HS
MODEL NO. : B SH 01



Becker HS
MODEL NO. : B SH 02



Becker HS
MODEL NO. : B SH 03



Becker HS
MODEL NO. : B SH 04



Becker HS
MODEL NO. : B SH 05

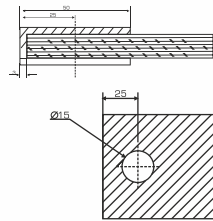


Becker HS
MODEL NO. : B SH 06

SHOWER HINGES



Becker HS
MODEL NO. : **B SH 07**

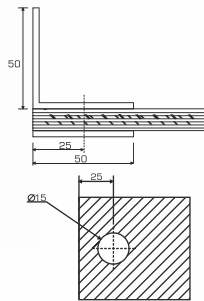


GLASS CONNECTOR FIX CLIP

Glass thickness 8mm to 12mm
Material: Brass
Finish: Satin Nickel | Chrome Plated



Becker HS
MODEL NO. : **B SH 08**

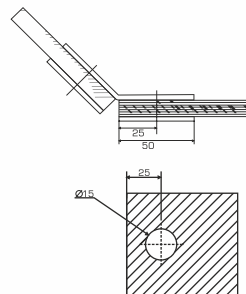


GLASS CONNECTOR WALL TO GLASS
90 DEGREES

Glass thickness 8mm to 12mm
Material: Brass
Finish: Satin Nickel | Chrome Plated



Becker HS
MODEL NO. : **B SH 09**

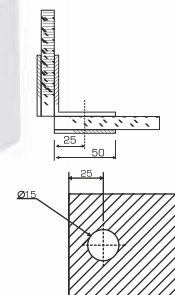


GLASS CONNECTOR GLASS TO GLASS 135
DEGREES

Glass thickness 8mm to 12mm
Material: Brass
Finish: Satin Nickel | Chrome Plated



Becker HS
MODEL NO. : **B SH 10**

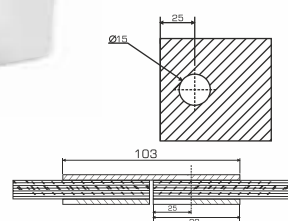


GLASS CONNECTOR GLASS TO GLASS
90 DEGREES

Glass thickness 8mm to 12mm
Material: Brass
Finish: Satin Nickel | Chrome Plated



Becker HS
MODEL NO. : **B SH 11**

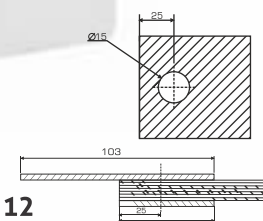


GLASS CONNECTOR GLASS TO GLASS 180
DEGREES

Glass thickness 8mm to 12mm
Material: Brass
Finish: Satin Nickel | Chrome Plated



Becker HS
MODEL NO. : **B SH 12**



GLASS CONNECTOR WALL TO GLASS 180
DEGREES

Glass thickness 8mm to 12mm
Material: Brass
Finish: Satin Nickel | Chrome Plated

SHOWER ACCESSORIES

GLASS DOOR KNOB



Becker HS
MODEL NO. : **BGK 1**
FINISH : SS/CP

GLASS DOOR KNOB



Becker HS
MODEL NO. : **BGK 2**
FINISH : SS/CP

GLASS DOOR KNOB



Becker HS
MODEL NO. : **BGK 3**
FINISH : SS/CP

SHOWER GLASS HANDLE

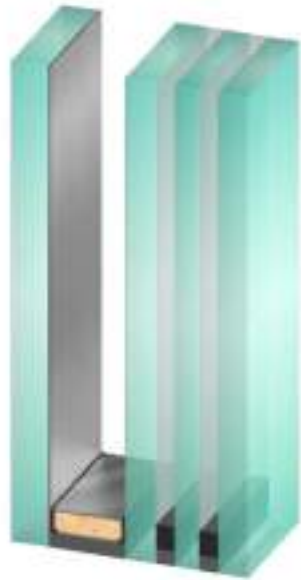


Becker HS
MODEL NO. : **BGK 4**
FINISH : SS/CP

SHOWER GLASS HANDLE



Becker HS
MODEL NO. : **BGK 5**
FINISH : SS/CP



PYROBECK - Fire Resistant Glass



Features and Benefits

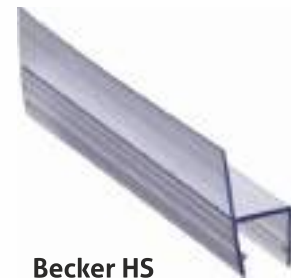
- Provides safety against fire, heat, and smoke for extended period.
- Ensures protection against radiation and conductive heat transfer
- Double sided Fire Resistant Glass , thus provides protection on both the sides
- Forms a barrier for gases and flames at the same time providing thermal insulation
- Rated EW60-EW120 , EI20
o (EW=Integrity + Radiation Control) (EI=Integrity + Insulation)
- The average temperature on the surface of non-fire side does not exceed 140°C
- Safety Glass according to EN 12600
- Compliant to latest National Building Code
- Can be combined with other types of glass, e.g. laminated or electrically heated.
- Most glass classes used in construction industry are: EI-30, EI-60, EI-90, EI-120



MODEL NO. : EI 30 GLASS - EI 60 GLASS – EI 90 GLASS – EI 120 GLASS

1	Fire Resistance Classification	EI 30	EI 60	EI 90	EI 120
2	Nominal thickness	16mm	24mm	33mm	47mm
3	Min. production size	200x200mm	200x200mm	200x200mm	200x200mm
4	Max. production size	2200x3000mm	2200x3000mm	2200x3000mm	2200x3000mm
5	Max tested size	information upon request	information upon request	information upon request	information upon request
6	Thickness tolerance	+2 / -1mm	+3 /-2mm	+3 /-2mm	+5 /-3mm
7	External size tolerance	+2 / -2mm	+2 / -2mm	+2 / -2mm	+3 / -3mm
8	Weight for min thickness	34kg / m2	52kg / m2	68kg / m2	98kg / m2
9	Temperature range	+45 /-10°C	+45 /-10°C	+45 /-10°C	+45 /-10°C
10	Light transmission	87%	86%	82%	76%
11	Sound reduction	Rw 38dB	Rw 42dB	Rw 43dB	Rw 46dB
12	U-value	5.0W/m2K	5.0W/m2K	5.0W/m2K	5.0W/m2K
13	UV Stable	EN ISO 125433 Pt. 6.5.2	EN ISO 125433 Pt. 6.5.2	EN ISO 125433 Pt. 6.5.2	EN ISO 125433 Pt. 6.5.2
14	G-Value in %	73%	69%	63%	57%

PVC SEALS



Becker HS
MODEL NO. : **B PS 01**
90 DEGREE GLASS SEAL



Becker HS
MODEL NO. : **B PS 02**
0 DEGREE GLASS SEAL



Becker HS
MODEL NO. : **B PS 03**
MIDDLE GLASS SEAL



Becker HS
MODEL NO. : **B PS 04**
180 DEGREE GLASS SEAL



Becker HS
MODEL NO. : **B PS 05**
135 DEGREE GLASS SEAL



Becker HS
MODEL NO. : **B PS 06**
90 DEGREE MAGNETIC GLASS SEAL



Becker HS
MODEL NO. : **B PS 07**
180 DEGREE MAGNETIC GLASS SEAL



Becker HS
MODEL NO. : **B PS 08**
135 DEGREE MAGNETIC GLASS SEAL

DOOR ACCESSORIES



**DOOR STOPPER
FLOOR MOUNTED**

Becker HS
MODEL NO. : **B DA 01**



BABY LATCH
Becker HS
MODEL NO. : **B DA 02**



DOOR BUFFER

Becker HS
MODEL NO. : **B DA 03**



EYE VIEWER
Becker HS
MODEL NO. : **B DA 04**



TOWER BOLT
Size : 4", 6", 8", 10", 12"

Becker HS
MODEL NO. : **B DA 05**



SECURITY CHAIN
Becker HS
MODEL NO. : **B DA 06**



DOOR COORDINATOR

Becker FS
MODEL NO. : **B DA 07** 🔥



DOOR CO-ORDINATOR
Becker FS
MODEL NO. : **B DA 08** 🔥



**FLUSH HANDLE –
RECTANGULAR**

Becker HS
MODEL NO. : **B DA 09**



FLUSH HANDLE – OVAL

Becker HS
MODEL NO. : **B DA 10**



DOOR STOPPER

Becker HS
MODEL NO. : **B DA 11**



FLUSH BOLT

Becker HS
MODEL NO. : **B DA 12**



ALDROP

Becker HS
MODEL NO. : **B DA 13**